

## Canada Day Crafts

### Northern Lights Scene

**Materials:**

Tissue paper  
White construction paper  
Paintbrush  
Black sharpie or crayon

**Directions:**

Using the black sharpie or crayon, draw a simple nature scene. Cut the tissue paper into strips. Using water and a paintbrush begin to wet the paper and lay down strips of tissue paper horizontally across the paper. Wet the top of the tissue paper. Layer the tissue paper to blend the colors. Continue to wet the paper as you go. Fill up the paper with tissue strips and let dry. When dry, peel back strips of tissue to reveal color.

### Canada Flag Door Hanger

**Materials:**

Red and white paint  
16 jumbo craft sticks  
2 Elmer's Foam Sheets (1 red, 1 white)  
2 chenille stems (1 red, 1 white)  
Paper, Pencil, Eraser  
Glue Gun



**Directions:**

Paint 8 Craft Sticks red and the other 8 white, and set aside to dry.

For a base, cut a white foam sheet to a 5 ½" x 11" rectangle. Using paper, draw (or print a template from the internet) and cut out a maple leaf approximately 4 ½" x 4 ½". Trace the leaf shape onto the red Foam Sheet and cut out.

Glue the painted sticks to the white foam rectangle to create the base of the flag. Glue down 4 red, 8 white and then 4 red. Let dry. Glue the maple leaf to the center of the flag and let dry. To make the hanger, twist the red and white chenille stems together and glue to the back of the flag.

**Canada Day Wand Streamer****Materials:**

Wooden dowel

Wooden bead

Red and white paint

Red and white ribbon

Hot glue

**Directions:**

Paint the dowel and bead red and/or white. Cut 4 or more pieces of ribbon. Hot glue them to the end of the wooden dowel. Glue a wooden bead on the end.

**Maple Leaf Table Runner****Materials:**

Red and White felt

Maple leaf [pattern](#)

Scissors

Fabric glue



**Directions:**

Trace several maple leaves onto red and white felt, as many as needed for desired length of runner. Cut out leaves. Glue the leaves together, alternating red and white leaves.

**Maple Leaf****Materials:**

Card Stock  
Maple leaf [pattern](#)  
Glue  
Red tissue paper

**Directions:**

Print out leaf pattern and trace onto cardstock. Cut tissue paper into 2" squares. Crumple each paper into a tight ball. Dip into glue and place onto leaf pattern. Continue gluing down pieces until the entire leaf is covered.

**Fireworks Hair Clip****Materials:**

Red and white felt  
Scissors  
Hot glue  
Hair clip, elastic band or brooch pin

**Directions:**

Cut 8 ( $\frac{3}{4}$ " ) strips along the short edge of the red felt. Do the same with the white felt. Layer the red and white strips in a stack. Wrap another strip of red felt around the middle of the stack and hot glue in back. Now attach to hair clip or pin using the hot glue.

## Canadian Peg Dolls

### Materials:

Wooden pegs  
Acrylic paint  
Beige felt



### Directions:

*For the Mountie:* Paint the body of the peg doll red. Paint the legs black with brown for the boots. Use brown for the belt, cross strap, and facial features. Paint yellow buttons on the jacket and a yellow strip down the side of the pants. Cut a circle of tan felt and hot glue a small rolled piece of tan felt to the center to form the hat. Glue to the top of the doll

*For the Moose:* Paint the entire peg brown. Use silver or gray paint for the hooves and facial features. Cut two antler shapes from the tan felt. Hot glue behind the Moose's head.

## Soap Carving

### Materials:

Bar of Ivory soap  
Carving tool (knife, Popsicle stick, etc.)  
Water



### Directions:

Decide what shape to carve. Draw an outline of your carving on one side of the soap. Remove the soap outside the outline using small slivers or chips. Make sure to scrape away only small portions at a time. Add detail to the inside of the outline to refine the design. When the carving is finished, wet your finger and rub the surface of the soap to create a smooth finish. Allow it to dry and harden.

## Canada Day Mason Jar

### Materials:

Red and white acrylic paint  
Paintbrush  
Mason jar  
Raffia or white ribbon



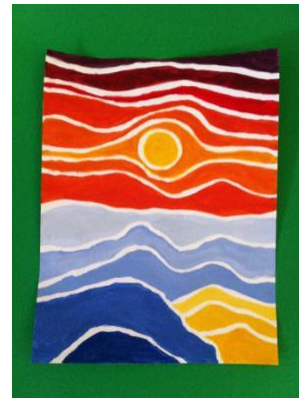
### Directions:

Paint a 3" section of the jar white. Let dry. Paint the remainder of the jar red. Paint a red maple shape in the center of the white section. Tie ribbon around the lip of the jar.

## Ted Harrison Landscape

### Materials:

White card stock or foam board  
White glue  
Colored markers or paint  
Images of [Ted Harrison landscapes](#)



### Directions:

View images of Ted Harrison's art work for inspiration. He paints majestic vistas with bold lines and colors. Sketch a landscape design on scratch paper. Using the sketch as a guide, make wavy glue lines on the card stock. Allow to air-dry overnight. Fill in the spaces with bold colors using paint or markers.